

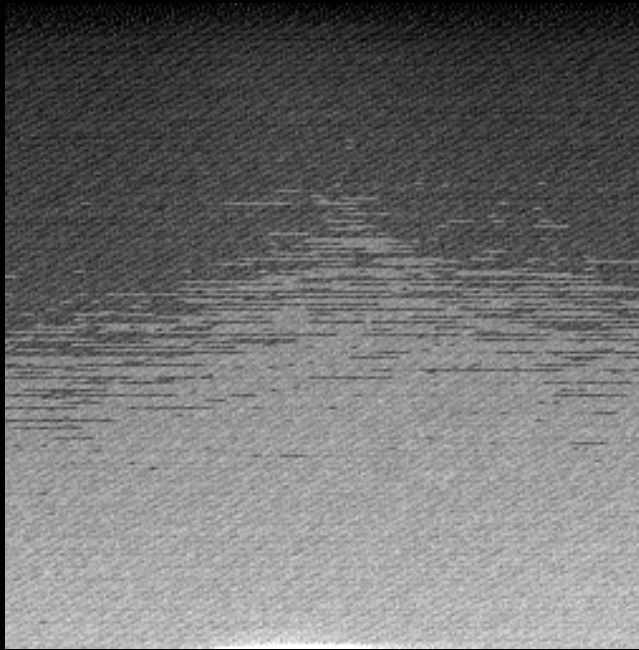
Saanich Inlet, B.C., Canada, 3 August 1997

Time: 00:00:54  
Depth(m): 6.000

$\lambda = 680 \text{ nm}$ ,  $\text{bw} = 40 \text{ nm}$



$\lambda = 649 \text{ nm}$ ,  $\text{bw} = 41 \text{ nm}$

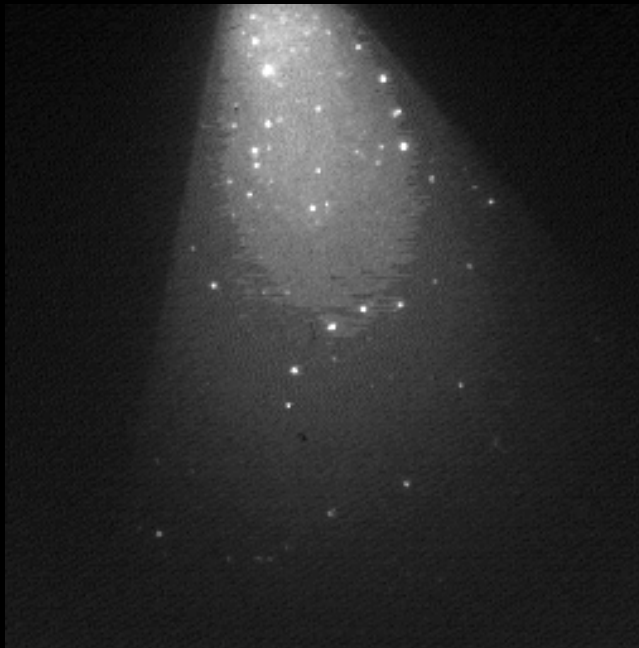


60 cm

$\lambda = 577 \text{ nm}$ ,  $\text{bw} = 40 \text{ nm}$



$\lambda = 486 \text{ nm}$ ,  $\text{bw} = 30 \text{ nm}$



60 cm

# DETAILS

Lenses: 12.5 mm, f1.3  
(1" format)  
Binning Factor: 2x2 pixels  
Exposure: 50 ms  
Illumination: Argon laser.  
Sheet projected  
1 m from camera.  
Volume Sampled: ~3 L

These pictures were taken  
in the chlorophyll maximum.  
Given the eutrophic  
environment, chlorophyll  
concentrations were high,  
on the order of  $2 \mu\text{g} / \text{L}$ .

Images represent raw,  
uncorrected data.