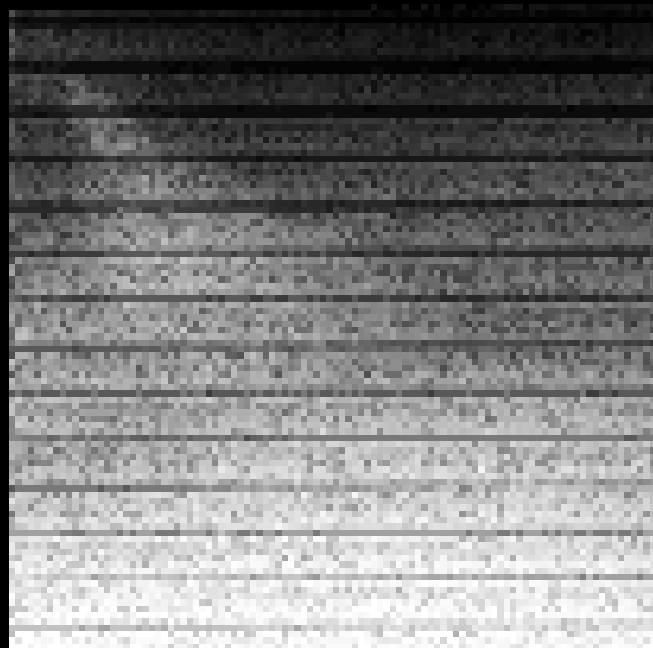


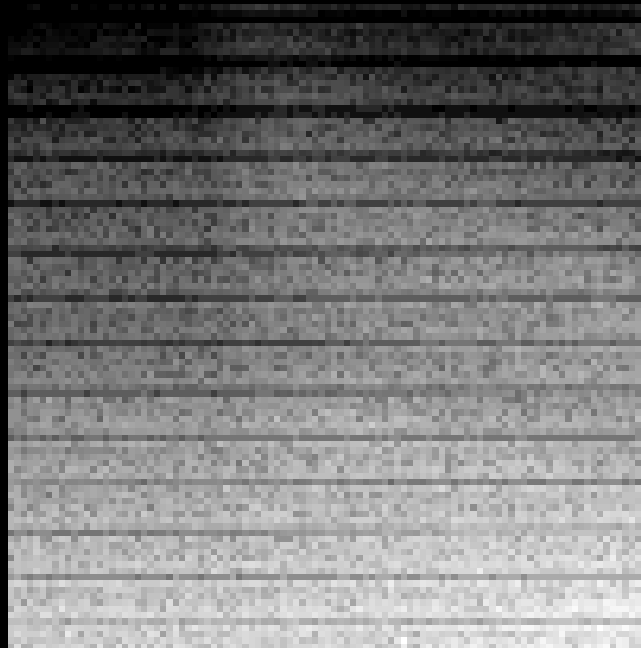
Gulf of Eilat, 27 May 1997

Time: 20:25:06
Depth(m): 76.000

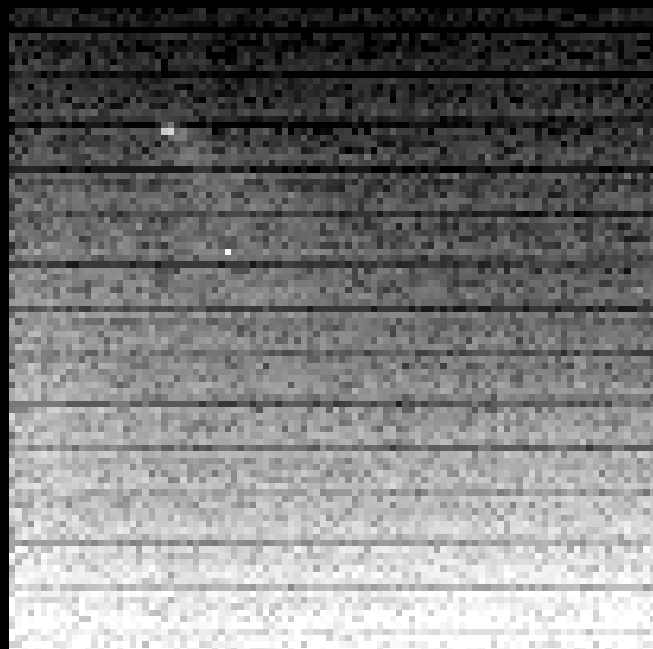
$\lambda = 680 \text{ nm}$, $bw = 40 \text{ nm}$



$\lambda = 649 \text{ nm}$, $bw = 41 \text{ nm}$



$\lambda = 577 \text{ nm}$, $bw = 40 \text{ nm}$



$\lambda = 532 \text{ nm}$, $bw = 10 \text{ nm}$



DETAILS

Lenses: 12.5 mm, f1.3
(1" format)
Binning Factor: 5x5 pixels
Exposure: 500 ms
Illumination: Nd:YAG laser.
Sheet projected
1 m from camera.
Volume Sampled: ~3 L

These pictures were taken at the top of the chlorophyll maximum. Given the oligotrophic environment, chlorophyll concentrations were quite low, on the order of $0.01 \mu\text{g} / \text{L}$.

Due to very low pigment concentrations, only faint fluorescence images were captured.

Images represent raw, uncorrected data.